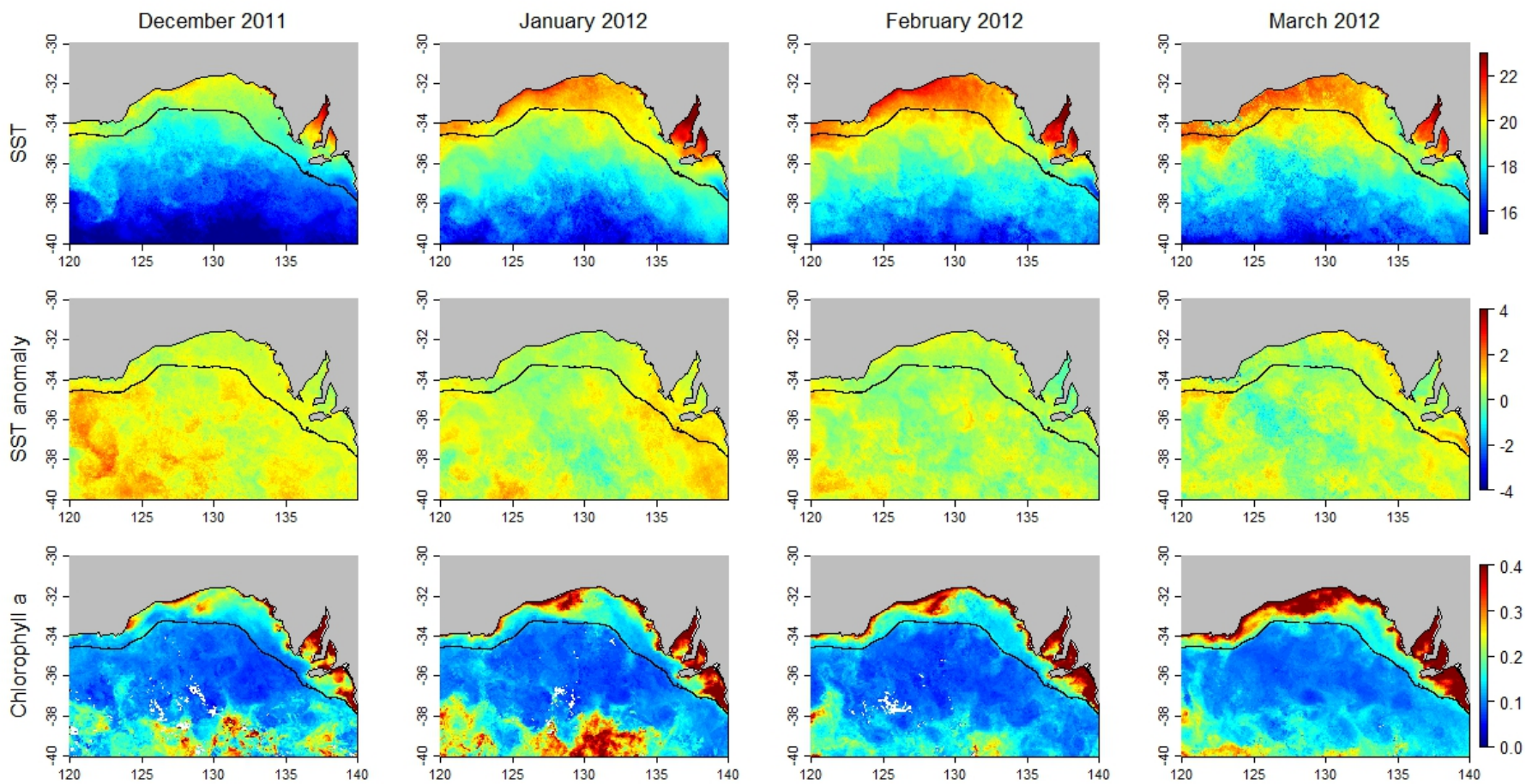


# Case study: season 2012

## (a) Observed conditions in December through March.

The top row shows the average SST in each month (°C), the second row shows the SST anomaly compared to the average SST for that month over the period 1994-2013 (°C), and the third row shows the average chlorophyll a in each month (mg/m<sup>3</sup>).



## (b) Forecasted SST and corresponding habitat preference maps for December through March.

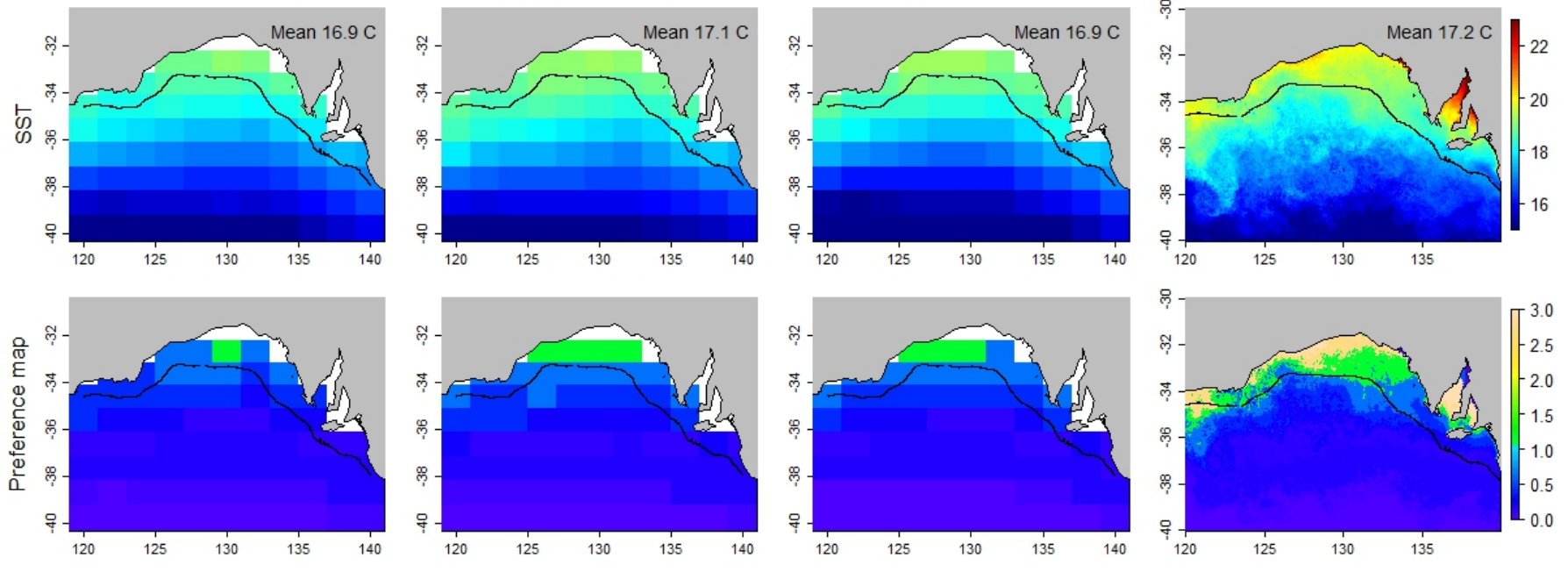
Forecasts shown are for 2 months, 1 month and 10 days in advance of the 1st day of the month being forecasted. Observed SST data are shown in the final column for comparison. The habitat preference maps include the aerial survey sightings data for the month being forecasted (pink circles, diameter proportional to biomass of sighting); the dashed line indicates the survey area. Recall that in the preference maps, values > 1 indicate preferred habitat.

December 2011 FORECAST  
Issued 01 Oct 2011

December 2011 FORECAST  
Issued 01 Nov 2011

December 2011 FORECAST  
Issued 21 Nov 2011

December 2011 OBSERVED



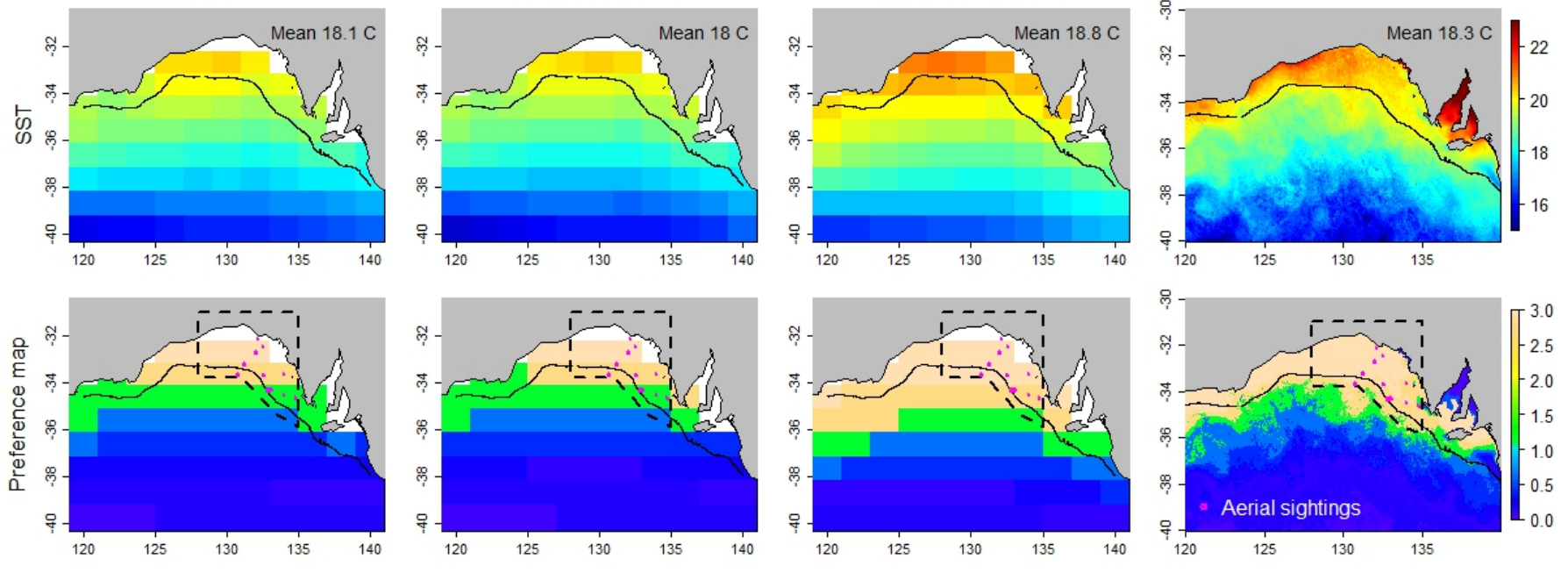
January

January 2012 FORECAST  
Issued 01 Nov 2011

January 2012 FORECAST  
Issued 01 Dec 2011

January 2012 FORECAST  
Issued 21 Dec 2011

January 2012 OBSERVED



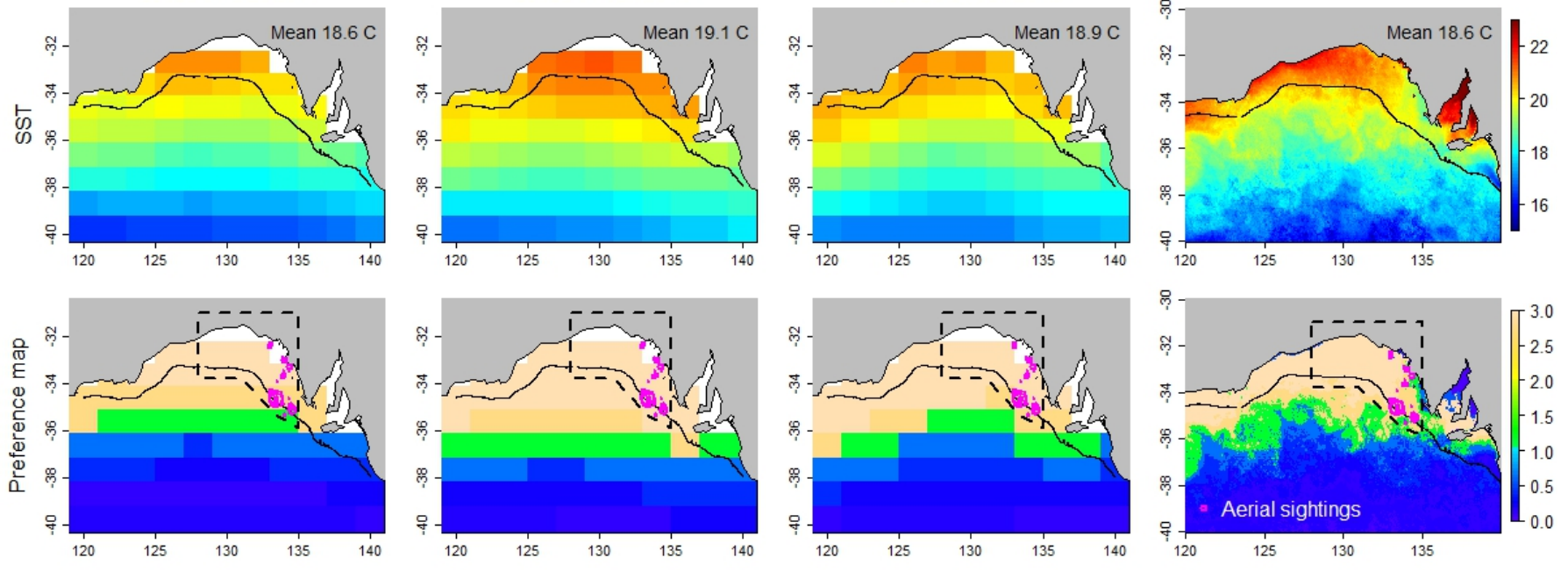
February

February 2012 FORECAST  
Issued 01 Dec 2011

February 2012 FORECAST  
Issued 01 Jan 2012

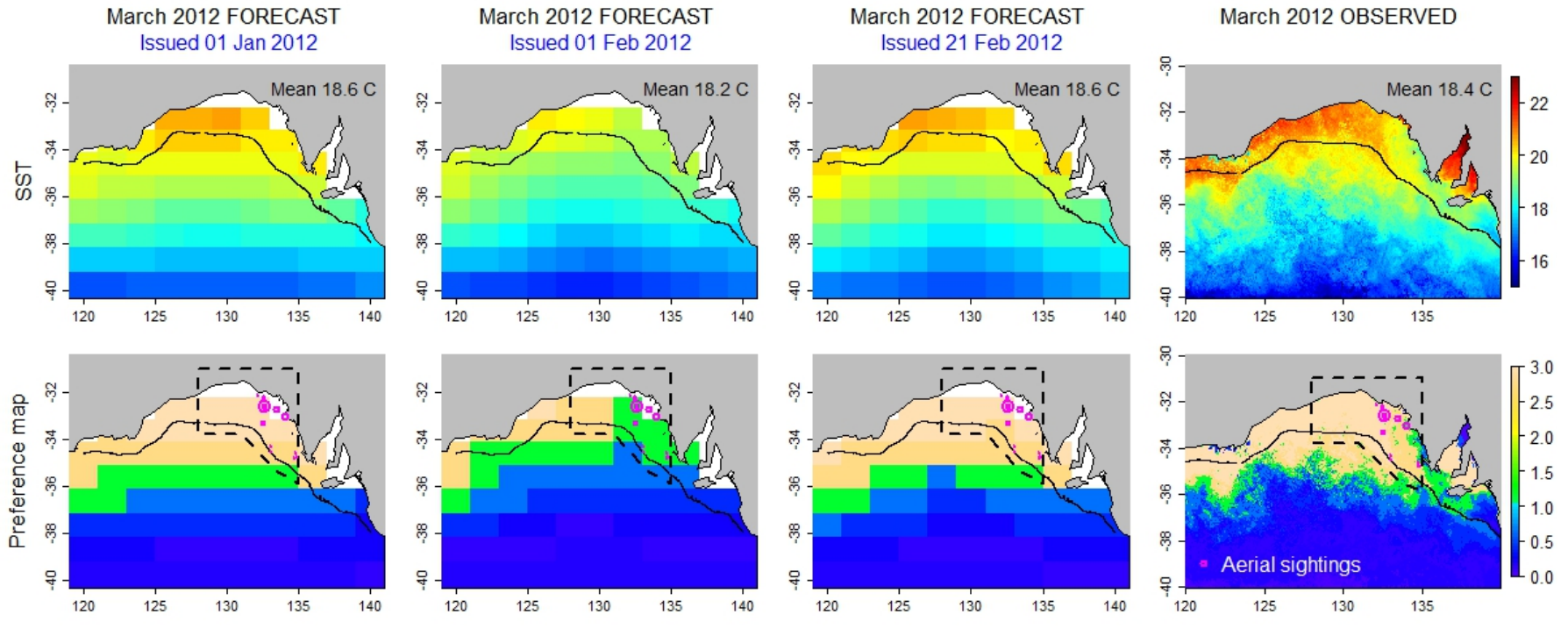
February 2012 FORECAST  
Issued 21 Jan 2012

February 2012 OBSERVED



March





[Back \(historical-casestudy.html\)](#)